



**EFFECTIVE WASTE
MANAGEMENT AND
SUSTAINABLE
DEVELOPMENT OF
MSME TANNING
COMPANIES IN
KOLKATA LEATHER
CLUSTER**

23 SEPTEMBER 2020

Key Components of the Project



1. Demonstration of green tanning technologies: cost effective, eco-friendly tanning solutions will be implemented at cluster level

2. Solid Waste Management Solutions: implementation of innovative solutions for converting waste to value



Key Components of the Project



3. Capacity building and development:

Trainings of workers in the tanning industry on green solutions and waste management



5. Public Private Partnership:

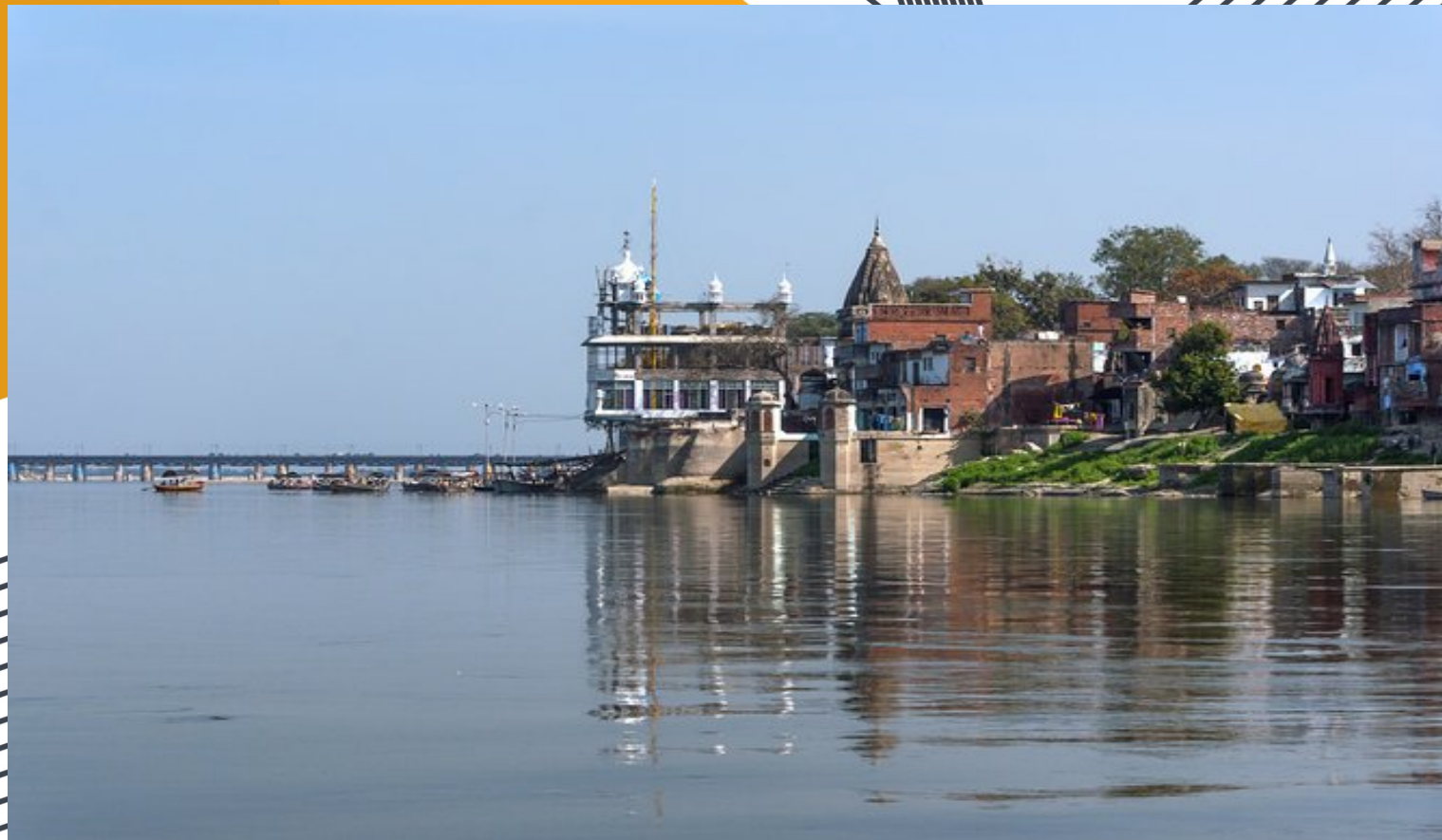
Establish a unique platform where stakeholders work together on a common goal



4. Occupational Health and Safety:

development of OHS framework, inhouse workshops, health camps and trainings of workers

- **Solidaridad** : lead consortium member, responsible for overall project planning and implementation
- **PISIE**: Support the training and development activities ; waste management and OHS framework and technical assistance in project implementation
- **CLC Tanners Association**: mobilize the tanners and facilitate the program implementation, dissemination of knowledge and information in the cluster
- **Stahl**: provide international technical expertise, inputs and lab testing support and support the functioning of PPP platform
- **Dugros**: Pilot demonstration of eco-friendly technologies and waste management solutions; inputs from the business perspective to enhance market competitiveness



PROVEN CASES FROM THE KANPUR-UNNAO LEATHER CLUSTER

Sharing a snapshot

Promoting resource efficiency and reducing the effluent discharge

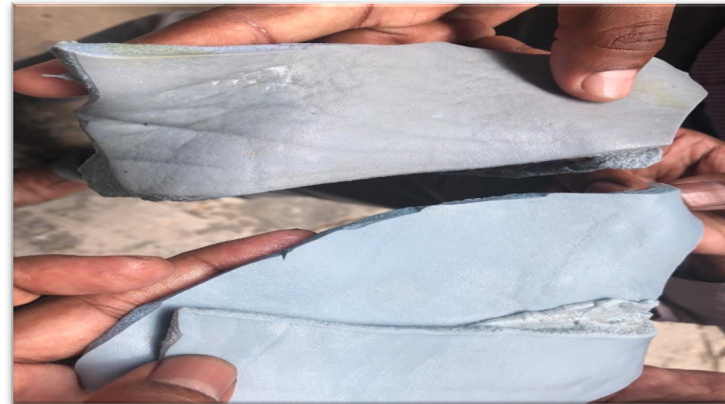
1. Reducing the TDS by 30% at the soaking stage through desalting the raw hides



3. Reducing TSS, BOD, COD and sludge by implementing pickle-free tanning in the operations



2. Retrofitting of the Solenoid valves on fleshing machines to reduce the process water consumption by 50%



Creating Waste to Value



Dried Sludge to Paver Tiles



Leather Trimmings to bags and other products



Fleshing waste to Tallow oil